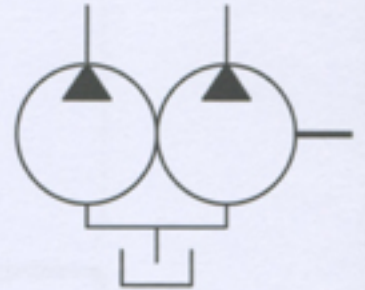
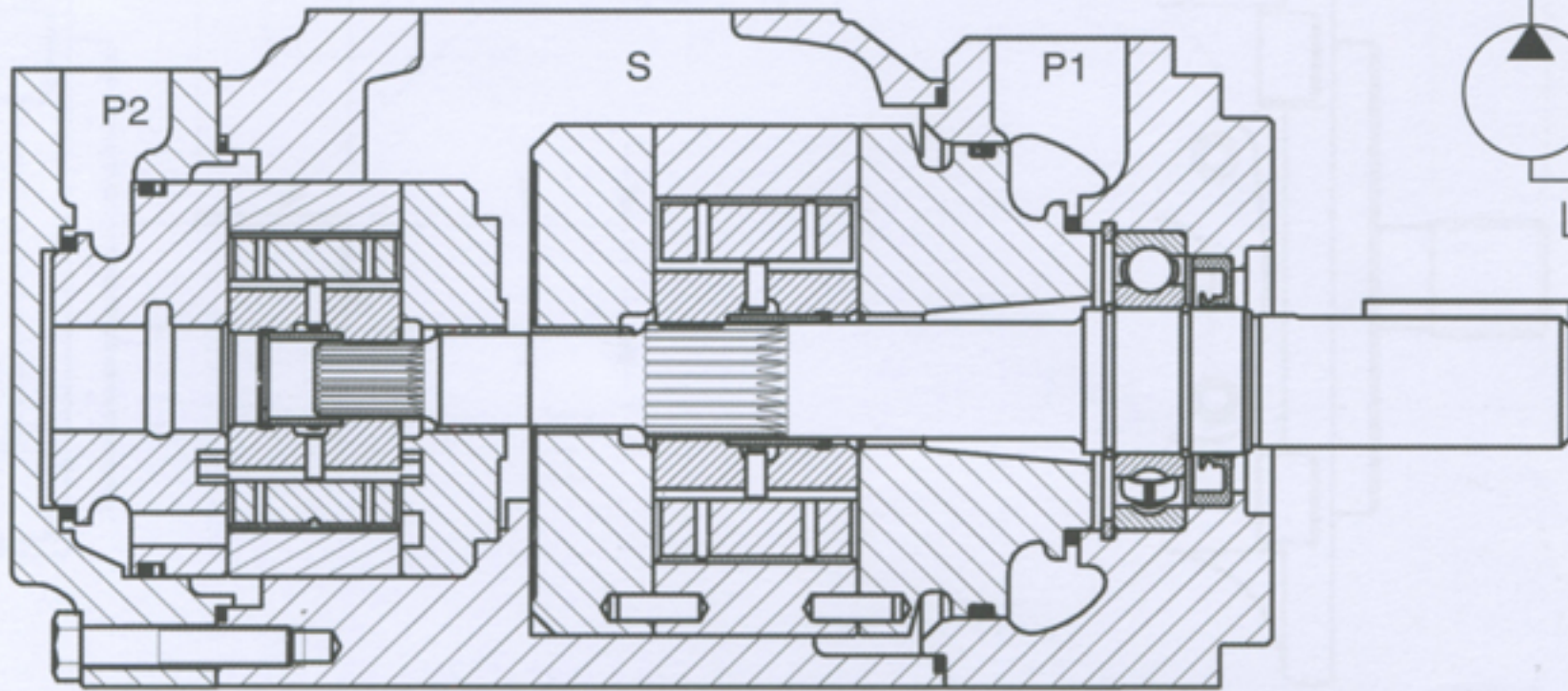




(T6CC)

双联叶片泵

T7BB, T67CB, T6CC 系列
T67DB, T6DC, T6DDS 系列
T67EB, T6EC, T6ED, T6EE 系列



型号说明 示例: T6CC-025-020-1R00-C100 - T6DC-045-014-2R00-C1

1. T6CC-025-020-1R00-C100 系列号

SAE 安装	T7BBS	T67CB T67CBW ¹	T6CC T6CCW ¹	
	T67DB T67DBW ²	T6DC T6DCW ²	T6DDS	
公制安装	T7BB	T6EE ³		T6EES ³

¹ T67CBW, T6 逆时针: 2号重载轴
² T67DBW, T6D 顺时针: 5号重载轴
³ T6EE / T6EES: 见“双联尾驱动叶片泵”部分。

2. T6CC-025-020-1R00-C100 泵芯规格

B	C	D	E
B02.....5.8	003.....10.8	014.....47.6	042.....132.3
B03.....9.8	005.....17.2	017.....58.2	045.....142.4
B04.....12.8	006.....21.3	020.....66.0	050.....158.5
B05.....15.9	008.....26.4	024.....79.5	052.....164.8
B06.....19.8	010.....34.1	028.....89.7	057.....179.8
B07.....22.5	012.....37.1	031.....98.3	062.....196.7
B08.....24.9	014.....46.0	035.....111.0	066.....213.3
B10.....31.8	017.....58.3	038.....120.3	072.....227.1
B12.....41.0	020.....63.8	042.....136.0	085.....269.0
B15.....50.0	022.....70.3	045.....145.7	
	025.....79.3	050.....158.0	
	028.....88.8		
	031.....100.0		

3. T6CC-025-020-1R00-C100 轴伸

4. T6CC-025-020-1R00-C100 转向

顺时针	R
逆时针	L

5. T6CC-025-020-1R00-C100 油口布置

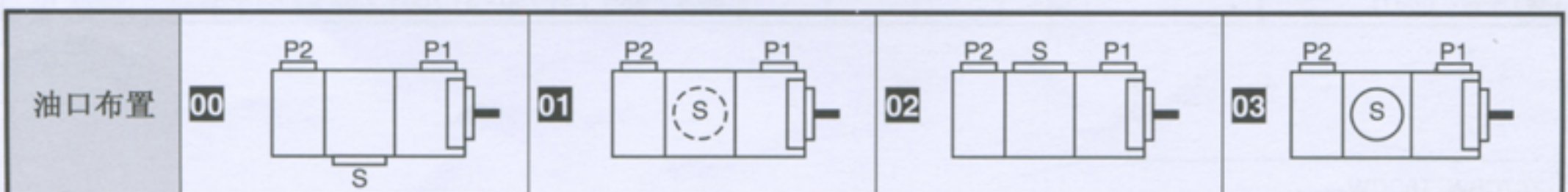
6. T6CC-025-020-1R00-C100 设计号

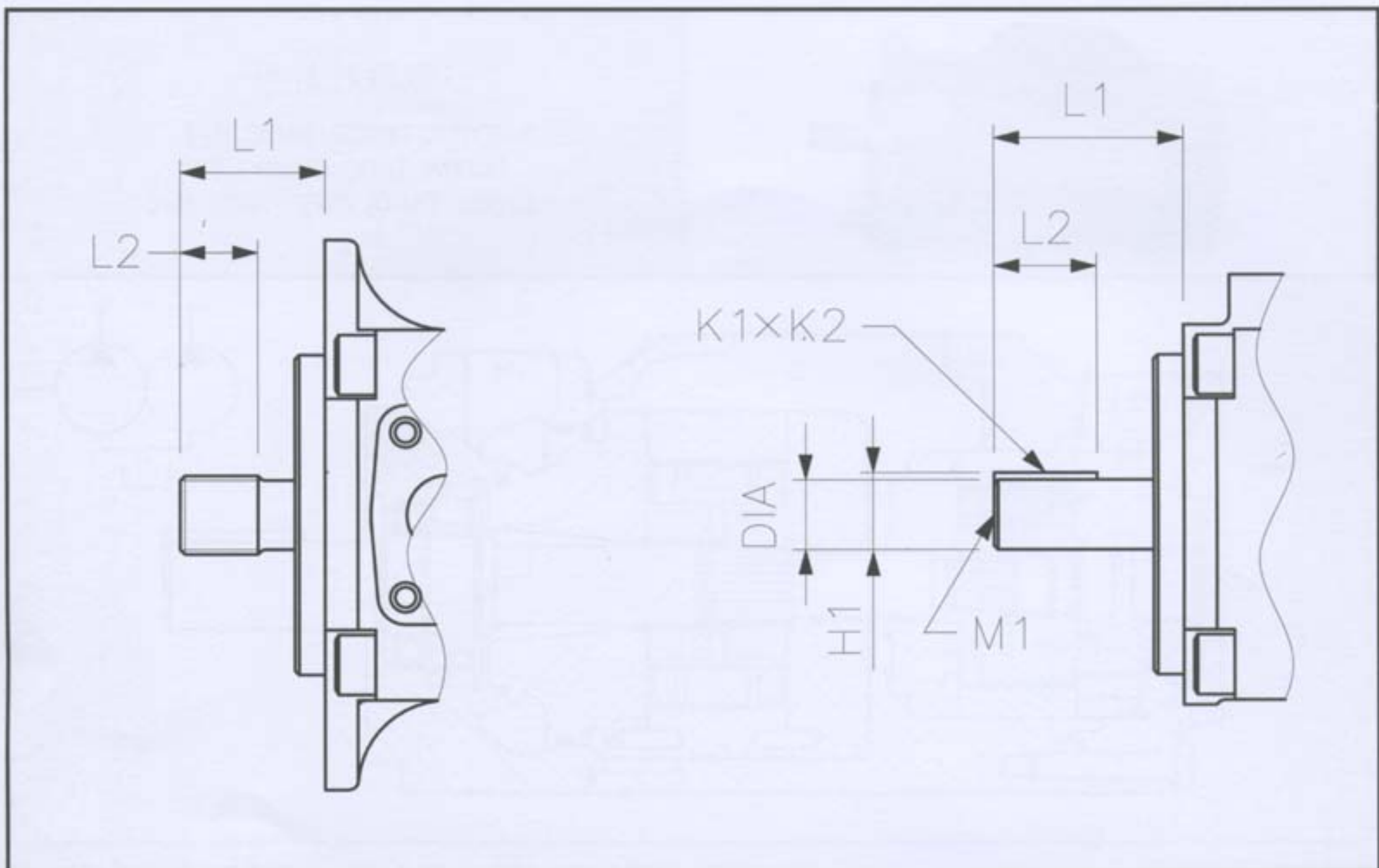
7. T6CC-025-020-1R00-C100 密封等级

丁腈橡胶: 矿物油	1
氟橡胶: 矿物油和阻燃液液压	5

8. T6CC-025-020-1R00-C100 油口尺寸

系列号	油口法兰螺纹			油口螺纹	
	S	P1	P2	公制螺纹	UNC 螺纹
T7BB	2 1/2"	1" - 3/4"	3/4"	M0 - M1	-
T7BBS	2 1/2"	1" - 3/4"	3/4"	M0 - M1	00 - 01
T67CB	2 1/2"	1"	1" - 3/4"	M0 - M1	00 - 01
T6CC	3"	1"	1" - 3/4"	0M - W0	00 - 01
	2 1/2"	1"	1" - 3/4"	1M - W1	10 - 11
T6DC	3"	1 1/4"	1"	无选项	无选项
T6DDS	4"	1 1/4"	1 1/4"	M0	00
T67EB	3 1/2"	1 1/2"	1" - 3/4"	M0 - M1	00 - 01
T6EC	3 1/2"	1 1/2"	1"	无选项	无选项
T6ED	4"	1 1/2"	1 1/4"	无选项	无选项

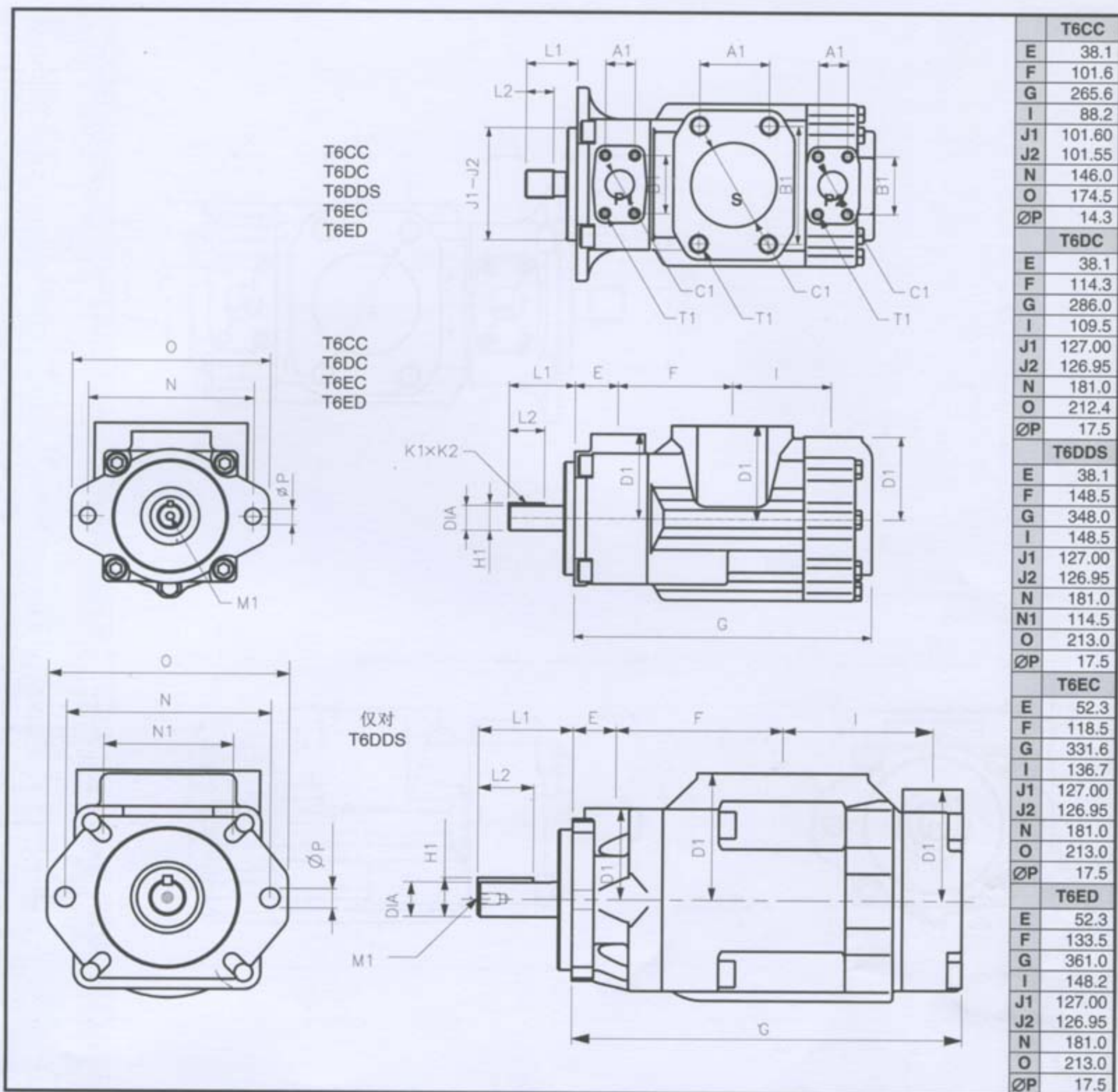




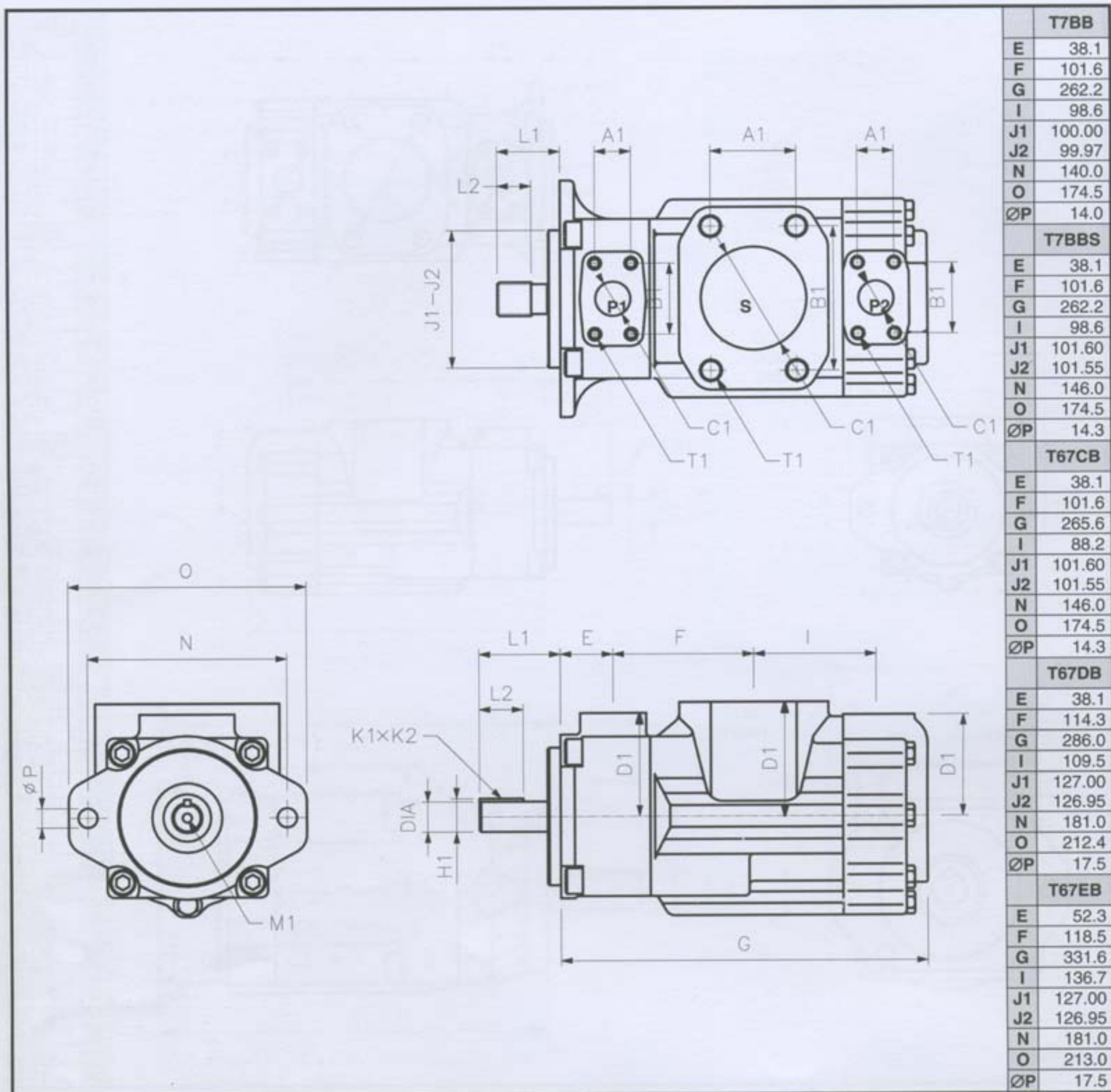
轴伸	最大扭矩 (Nm)						尺寸 (mm)					
	T7BB	T7BBS	T67CB T6CC	T67DB T6DC	T6DDS	T67EB T6EC T6ED	L1	L2	直径	K1 x K2	H1	M1
1	平键: 非 SAE (Ø22)	238	238				58.2	31.7	22.225 - 22.200	4.76 x 4.71	24.53	
	平键: SAE C (Ø31)			721	686		83.6	49.3	31.750 - 31.700	7.94 x 7.89	35.27	M10 x 20.0
	平键: SAE CC (Ø38)					●	90.9	50.8	38.100 - 38.050	9.52 x 9.47	42.36	M10 x 20.0
2	平键: SAE BB (Ø25)	357	357				71.4	38.1	25.400 - 25.370	6.35 x 6.30	28.22	M8 x 16.0
	平键: 非 SAE (Ø31)			577			73.2	38.1	31.750 - 31.700	7.94 x 7.89	35.27	
	平键: SAE-CC				●		91.0	50.8	38.100 - 38.050	9.52 x 9.47	42.36	M10 x 20
	平键: 非 SAE (Ø31)					577	61.9	38.1	31.750 - 31.700	7.94 x 7.89	35.27	
3	花键: SAE B	●					40.7	24.5	SAE J498b 1 级, 径节 16/32, 13 牙			
	花键: SAE BB		545				45.5	24.5	SAE J498b 1 级, 径节 16/32, 15 牙			
	花键: SAE C			●	971	●	55.7	38.0	SAE J498b 1 级, 径节 12/24, 14 牙			
4	花键: SAE BB	●					45.6	24.5	SAE J498b 1 级, 径节 16/32, 15 牙			
	花键: 非 SAE			●			77.7	48.0	SAE J498b 1 级, 径节 12/24, 14 牙			
	花键: SAE BB				570		46.0	31.5	SAE J498b 1 级, 径节 16/32, 15 牙			
	花键: SAE CC					●	62.2	31.5	SAE J498b 1 级, 径节 12/24, 17 牙			
5	花键: SAE B		343				40.7	24.5	SAE J498b 1 级, 径节 16/32, 13 牙			
	平键: 非 SAE (Ø34)			● ¹	883		83.4	60.0	34.900 - 34.875	7.94 x 7.89	38.42	M8 x 16
	平键: ISO (Ø25)	●					70.0	40.0	25.006 - 24.993	8.0 x 7.96	28.22	
R	平键: (Ø25)		302 ¹				48.7	31.8	25.400 - 25.370	6.35 x 6.30	28.22	M8 x 16
V	平键: (Ø32)		545 ¹				89.0	50.0	32.000 - 31.960	10.00 x 9.98	35.40	M12 x 24
X	平键: (Ø27)		423 ¹				64.1	49.2	26.950 - 26.920	6.35 x 6.30	29.85	M8 x 16
W	平键: (Ø31)		545 ¹				55.5	38.1	31.750 - 31.700	7.94 x 7.89	35.27	M8 x 16

¹ T67CBW, T6CCW
² T67DBW, T6DCW

叶片泵 - 双联叶片泵



油口			尺寸 (mm)				T1 口螺纹	
			A1	B1	ØC1	D1	T1 口螺纹	
							公制	UNC
T6CC	P1	1"	26.2	52.4	25.4	76.2		3/8"-16UNC x 19.0
	P2	01-11: 3/4"	22.2	47.7	19.0	76.2		3/8"-16UNC x 19.0
		00-10: 1"	26.2	52.4	25.4	74.7		
S	10-11: 2 1/2"	50.8	88.9	63.5	84.1		1/2"-13UNC x 23.9	
	00-01: 3"	61.9	106.4	76.2			5/8"-11UNC x 28.4	
T6DC	P1	1 1/4"	30.2	58.7	31.8	82.6		7/16"-14UNC x 22.3
	P2	1"	26.2	52.4	25.0	74.7		3/8"-16UNC x 19.0
	S	3"	62.0	106.4	76.0	88.9		5/8"-11UNC x 28.4
T6DDS	P1	1 1/4"	30.2	58.7	31.8	82.6	M12 x 22.3	7/16"-14UNC x 22.3
	P2	1 1/4"	30.2	58.7	31.8	101.6	M12 x 24.0	7/16"-14UNC x 24.0
	S	4"	77.8	130.2	101.6	115.0	M16 x 30.0	5/8"-11UNC x 30.0
T6EC	P1	1 1/2"	35.7	69.8	37.1	98.4		1/2"-13UNC x 23.4
	P2	1"	26.2	52.4	25.0	74.7		3/8"-16UNC x 19.0
	S	3 1/2"	69.9	120.6	88.9	102.4		5/8"-11UNC x 29.5
T6ED	P1	1 1/2"	35.7	69.8	37.1	98.4		1/2"-13UNC x 23.4
	P2	1 1/4"	30.2	58.7	29.5	101.6		7/16"-14UNC x 24.0
	S	4"	77.8	130.2	101.6	102.4		5/8"-11UNC x 30.0



油口			尺寸 (mm)					T1 口螺纹	
			A1	B1	$\phi C1$	D1	T1 口螺纹		
							公制	UNC	
T7BB T7BBS	P1	$\diamond 1: \frac{3}{4}"$ $\diamond 0: 1"$	22.2 26.2	47.6 52.4	19.0 25.4	74.7	M10 x 19.0	$\frac{3}{8}"-16UNC$ x 19.0	
	P2	$\frac{3}{4}"$	22.2	47.6	19.0	74.7	M10 x 19.0	$\frac{3}{8}"-16UNC$ x 19.0	
	S	$2 \frac{1}{2}"$	50.8	88.9	63.5	84.1	M12 x 22.4	$\frac{1}{2}"-13UNC$ x 23.9	
T67CB	P1	1"	26.2	52.4	25.4	76.2	M10 x 19.0	$\frac{3}{8}"-16UNC$ x 19.0	
	P2	$\frac{3}{4}"$	22.2	47.7	19.0	76.2	M10 x 19.0	$\frac{3}{8}"-16UNC$ x 19.0	
	S	$2 \frac{1}{2}"$	50.8	88.9	63.5	84.1	M12 x 30.0	$\frac{1}{2}"-13UNC$ x 23.9	
T67DB	P1	$1 \frac{1}{4}"$	30.2	58.7	31.8	82.6	M12 x 22.3	$\frac{7}{16}"-14UNC$ x 22.3	
	P2	$\frac{3}{4}"$	22.2	47.7	19.0	74.7	M10 x 19.0	$\frac{3}{8}"-16UNC$ x 19.0	
	S	3"	62.0	106.4	76.0	88.9	M16 x 28.4	$\frac{5}{8}"-11UNC$ x 28.4	
T67EB	P1	$1 \frac{1}{2}"$	35.7	69.8	37.1	98.4	M12 x 23.5	$\frac{1}{2}"-13UNC$ x 23.4	
	P2	$\frac{3}{4}"$	22.2	47.7	19.0	74.7	M10 x 19.0	$\frac{3}{8}"-16UNC$ x 19.0	
	S	$3 \frac{1}{2}"$	69.9	120.6	88.9	102.4	M16 x 29.5	$\frac{5}{8}"-11UNC$ x 29.5	